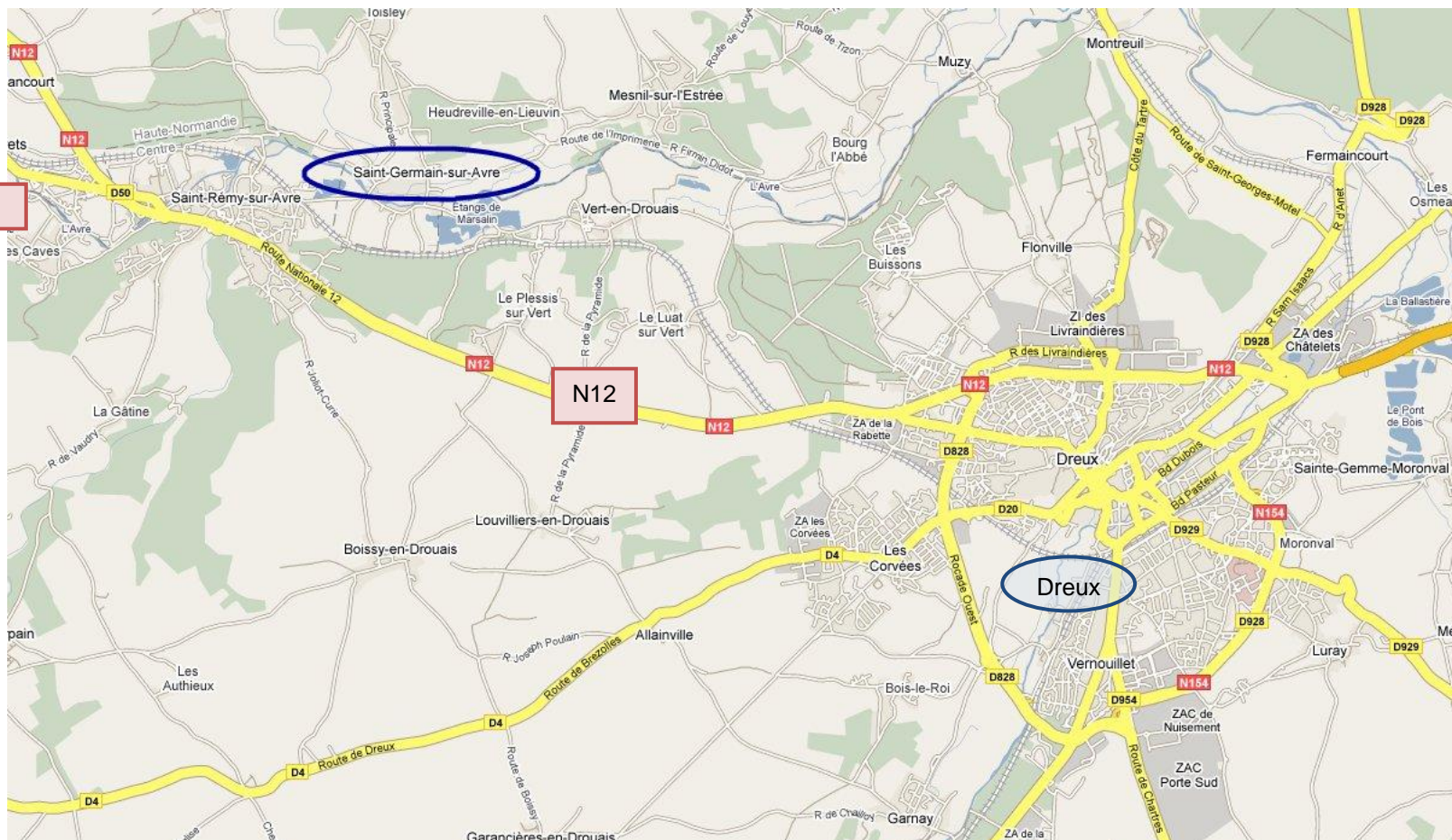


← The coast, ferries...



N12  
→ Paris

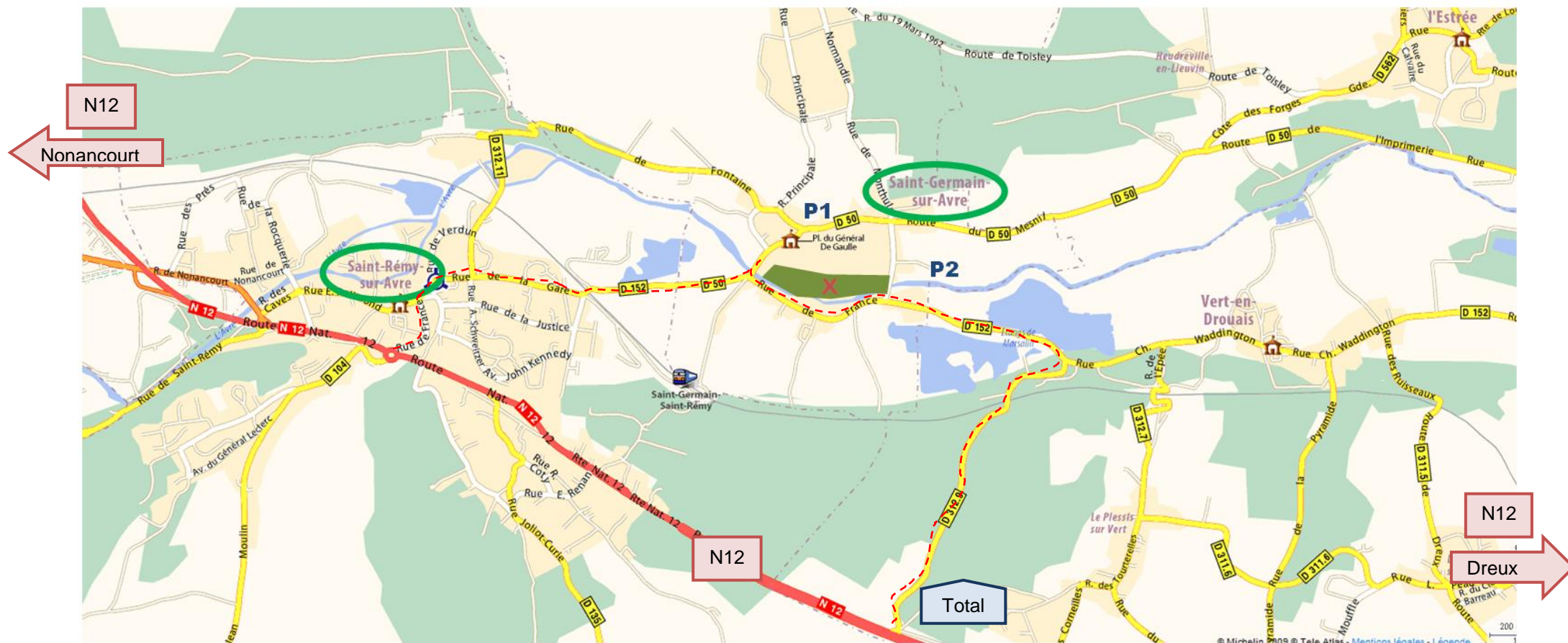
## WELCOME TO TRUSSY FARM AND CANINATURE!

You find us 85 kilometres West of Paris, on the national road N12, in the little village Saint Germain sur Avre just between the cities Dreux and Nonancourt Dreux.

**Address:** 3 Routes du Mesnil  
27 320 St Germain sur Avre

**GPS coordinates :** 48.764322,1.262462

Your GPS will probably send you to the wrong end of our street, so enter "Caninature" in Google maps to get our exact location beforehand or look at the street numbers when you approach



### Coming by car from the direction of Evreux and Nonancourt (North and West)

From Nonancourt, take N12 towards Dreux and exit left in the roundabout indicating "St Germain sur Avre". Pass through the charming village of St Rémy, still following the signs for "St Germain sur Avre" (going towards the church).

When you leave St Rémy (after having gone past the church and the "Gendarmerie", you will cross the railroad tracks before coming to the village St Germain and a crossing. Turn left, towards "Mesnil sur l'Estrée", and cross a couple of bridges over the river Avre. You find us in Trussy Farm, to the right just after the bridges, with the white iron gate.

### Coming by car from the directions of Paris (East) or Chartres (South)

In Dreux, follow the signs for Evreux and take N12 out of Dreux. After 5.5 kilometres you arrive at a TOTAL gasoline stand and the rest area "Aire du Bois de Vert". Take off at the gas stand, driving through it, to take right just after the stand towards "St Germain sur Avre". You will be on road D312.9.

At the T-crossing after 1.5 winding kilometres, take left towards St Germain sur Avre (D152).

After another 1.6 kilometres, at the first stop sign, take right and cross the bridges over the river Avre. This is Route du Mesnil and you find the Trussy Farm to the right just after the three bridges, with the white iron gate.



## WHERE TO PARK YOUR CAR AND WALK YOUR DOGS IN OUR VILLAGE

There are a couple of cute, short walks on walking distance from the farm. Ask us for longer walks around here!

If you are staying in our guesthouse, you can park to the right just inside the gate, under the trees.

If you are here for a clinic, unfortunately we can't fit all of your cars in our yard. If there is no more space outside our gate or in the street opposite it, there are several parking places in the village:

**P1:** Park next to the town hall and the school if we work in the field by the school or if you have a big car.

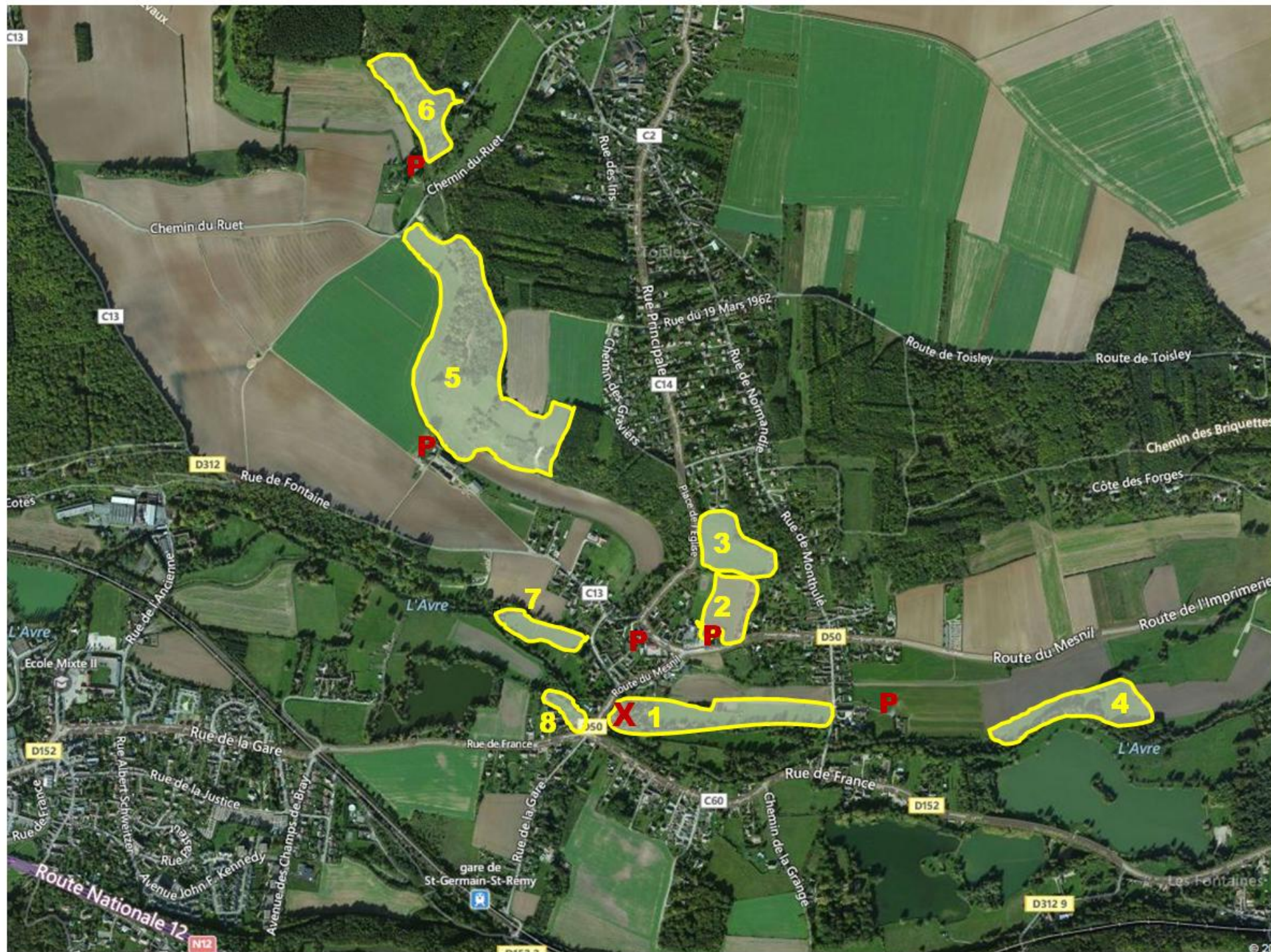
**P3:** Park at the end of the small blind alley «Impasse du Moulin», coming from Rue de Monthulé, and go through the gate to get to our fields.

**P2:** Park by the church and take the small path down between the houses to our entrance gate to come to our farm.





## OUR OTHER FIELDS



- 1 : The farm
- 2 : The school
- 3 : The top
- 4 : Delta
- 5 : The hills
- 6 : The château
- 7 : Bic
- 8 : Eden



# TRUSSY FARM

